

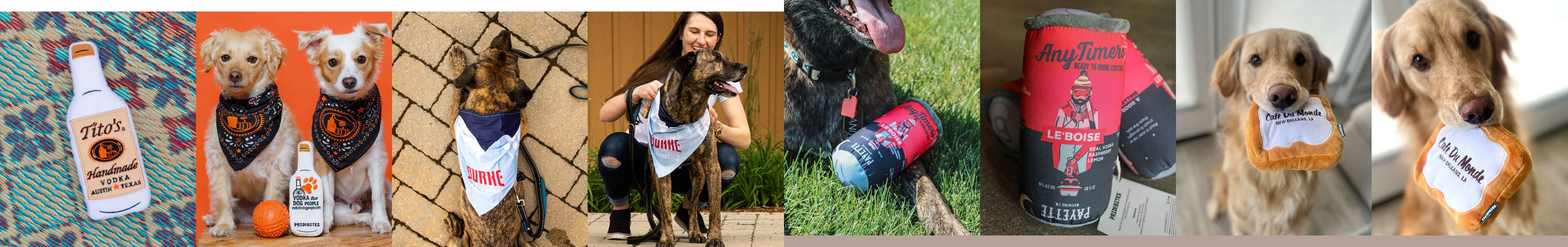
# *branded* **PET PRODUCTS**

Product Catalog

2025







Montage Hotel



ALYS Beach



Alderbrook Resort & Spa



Hotel Indigo

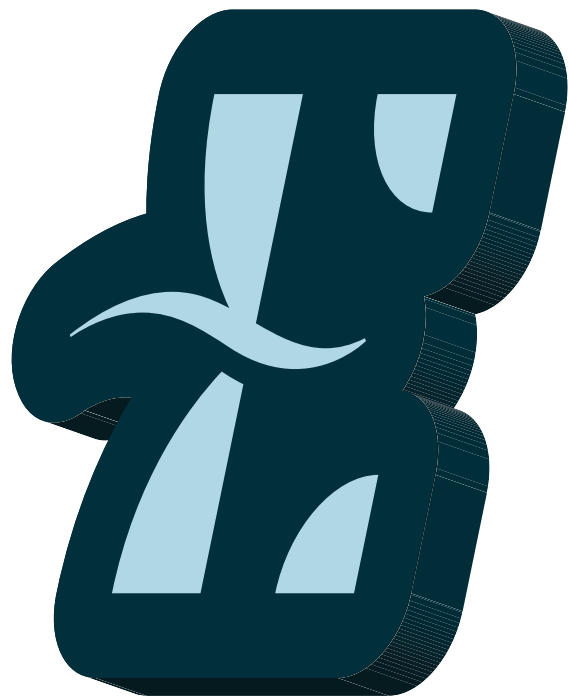


Stay Pineapple

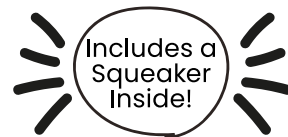


- 01 **DOG TOYS**
- 02 **FOR A WALK**
- 03 **ACCESSORIES**
- 04 **HOME & LIVING**
- 05 **APPAREL**
- 06 **FOR CATS**

# 01 **DOG TOYS**



Features:

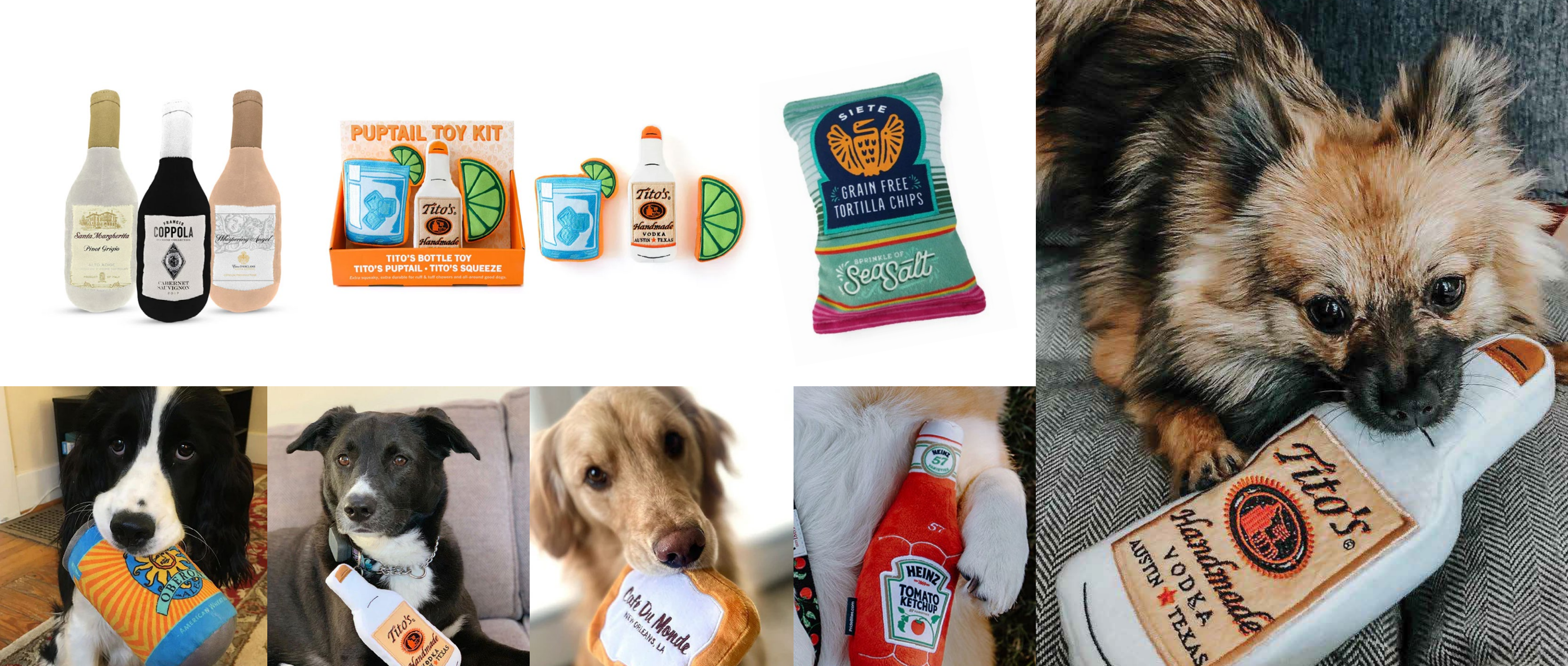


Best Dog Toy Awards:



Pet Business  
Industry  
Recognition  
Awards  
Winner





## CUSTOM DOG TOYS

0225



### Features:

- Great for indoor or outdoor play
- Ideal for both water and land activities
- Squeaks - dogs love it!
- 55 lbs of pull pressure
- Ultra lightweight
- Machine washable
- Dogs of all sizes love these toys!

### Size chart:

Our dog toys are fully customizable. Available in any shape, size, & color. We can take any logo, image, regional/national icon or idea and help you turn it into a toy.

### Pricing:

	100	300	500	1000
One Size	\$14.00	\$13.50	\$13.00	\$12.50

**Virtual proof:** Free upon request with order  
**Normal production time:** 6 weeks  
**Setup fee:** Opening order: \$75  
**Pre-production approval hold fee:** \$150 after 3 business days

Spec Sample (2 units): \$350

\*Note - pricing includes shipping to one location in the USA  
 \*\*This is your delivered price.





## CUSTOM PLUSH TOY

0225



- Features:**
- Multiple fabrics and materials
  - Squeaks - dogs love it!
  - Your iconic brand image recreated as a dog toy
  - Available in any shape, size and color
  - A toy as unique as your brand!

**Virtual proof:** Free upon request with order  
**Normal production time:** ~6 weeks  
**Setup fee - Opening order:**  
Under 500 units: \$200  
500+ units: \$100  
**Setup fee - Exact Repeat:** \$70  
**Pre-production approval hold fee:**  
\$150 after 3 business days

**Size chart:**  
Our custom plush dog toys are fully customizable.  
Available in any shape, size and color.

**Pricing:**  
MOQ: 250 Units

Our Plush Toys require a custom quote.  
Once design is finalized, we will be able to  
quote you within 72 hours.

Spec Sample (2 units): \$450  
  
\*Note - pricing includes shipping to one location in the USA  
\*\*This is your delivered price.



## PLUSH CAN TOY

0225



- Features:**
- Multiple fabrics
  - Squeaker included!
  - Stuffed with cotton
  - Print your own label

**Virtual proof:** Free upon request with order  
**Normal production time:** 6 weeks  
**Setup fee: Opening order:** \$100. Exact repeat setup: \$70  
**Pre-production approval hold fee:**  
\$150 after 3 business days

**Size chart:**

	Normal	Tall	Slim
Height	6"	7"	7"
Width	3"	3"	2.5"

**Pricing:**

	100	300	500	1000
One Size	\$14.00	\$13.50	\$13.00	\$12.50

Spec Sample (2 units): \$350  
  
\*Note - pricing includes shipping to one location in the USA  
\*\*This is your delivered price.  
\*\*\*MOQ's are per size, per design (You cannot mix and  
match designs/sizes to achieve MOQ)





PLUSH WINE BOTTLE

0225



Features:

- Multiple fabrics
- Squeaker included!
- Stuffed with cotton
- Print your own label

Size chart:

	Normal
Height	8"
Width	2.6"

Pricing:

	125	250	625	1000
One Size	\$13.25	\$12.75	\$12.25	\$11.75

Spec Sample (2 units): \$350

\*Note - pricing includes shipping to one location in the USA  
\*\*This is your delivered price  
\*\*\*This item's MOQ might vary based on complexity and size of the design.

**Virtual proof:** Free upon request with order  
**Normal production time:** 6 weeks  
**Setup fee: Opening order:** \$100. Exact repeat setup: \$70  
**Pre-production approval hold fee:** \$150 after 3 business days



PLUSH LIQUOR BOTTLE

0225

Features:

- Available in multiple fabrics
- Squeaker included!
- Stuffed with cotton
- Print anything you want on it

Size chart:

	Normal
Height	7-8"
Width	2.5-3"

Pricing:

	125	250	625	1000
One Size	\$13.25	\$12.75	\$12.25	\$11.75

Spec Sample (2 units): \$350

\*Note - pricing includes shipping to one location in the USA  
\*\*This is your delivered price  
\*\*\*This item's MOQ might vary based on complexity and size of the design.

**Virtual proof:** Free upon request with order  
**Normal production time:** 6 weeks  
**Setup fee: Opening order:** \$100. Exact repeat setup: \$70  
**Pre-production approval hold fee:** \$150 after 3 business days



PLUSH BEER BOTTLE

0225

Features:

- Available in multiple fabrics
- Squeaker included!
- Stuffed with cotton
- Print your bottle label or make one up!

Size chart:

	Normal
Height	8"
Width	2.6"

Pricing:

	150	450	750
One Size	\$13.25	\$13.00	\$12.75

Spec Sample (2 units): \$350

\*Note - pricing includes shipping to one location in the USA  
\*\*This is your delivered price.

**Virtual proof:** Free upon request with order  
**Normal production time:** 6 weeks  
**Setup fee: Opening order:** \$100. Exact repeat setup: \$70  
**Pre-production approval hold fee:** \$150 after 3 business days





## FRISBEE ROPE TOY

0225

### Features:

- Durable - made of climbing rope
- Durable nylon fabric
- Fun for you and your pup!
- Easy-to-catch (easy-to-throw)
- A great way to bond with your pup
- Perfect for outdoor playtime!

### Rope Color Options:

- 100 Units      500+ Units
- ☒ Black      ☒ All Colors
- ☐ White

**Virtual proof:** Free upon request with order  
**Normal production time:** ~6 weeks  
**Setup fee: Opening order:** \$75. Exact repeat setup: \$50  
**Pre-production approval hold fee:** \$150 after 3 business days

### Size chart:

	One Size
Height	9"
Width	9"

### Pricing:

	100	200	500	1000
One Size	\$13.00	\$12.50	\$12.00	\$11.50

Spec Sample (2 units): \$350

\*Note - pricing includes shipping to one location in the USA  
\*\*This is your delivered price.



## TENNIS BALL SLING

0225

### Features:

- A perfect way to exercise your pup
- Ideal for outdoor playtime
- Soft, yet durable, fabric is gentle on your dog's teeth and gums

**Virtual proof:** Free upon request with order  
**Normal production time:** 6 weeks  
**Setup fee: Opening order:** \$75. Exact repeat setup: \$50  
**Pre-production approval hold fee:** \$150 after 3 business days

### Size chart:

	One Size
Width	3/4"
Length	12"

### Pricing:

	100	300	500	1000
One Size	\$10.00	\$9.50	\$9.00	\$8.50

Spec Sample (2 units): \$350

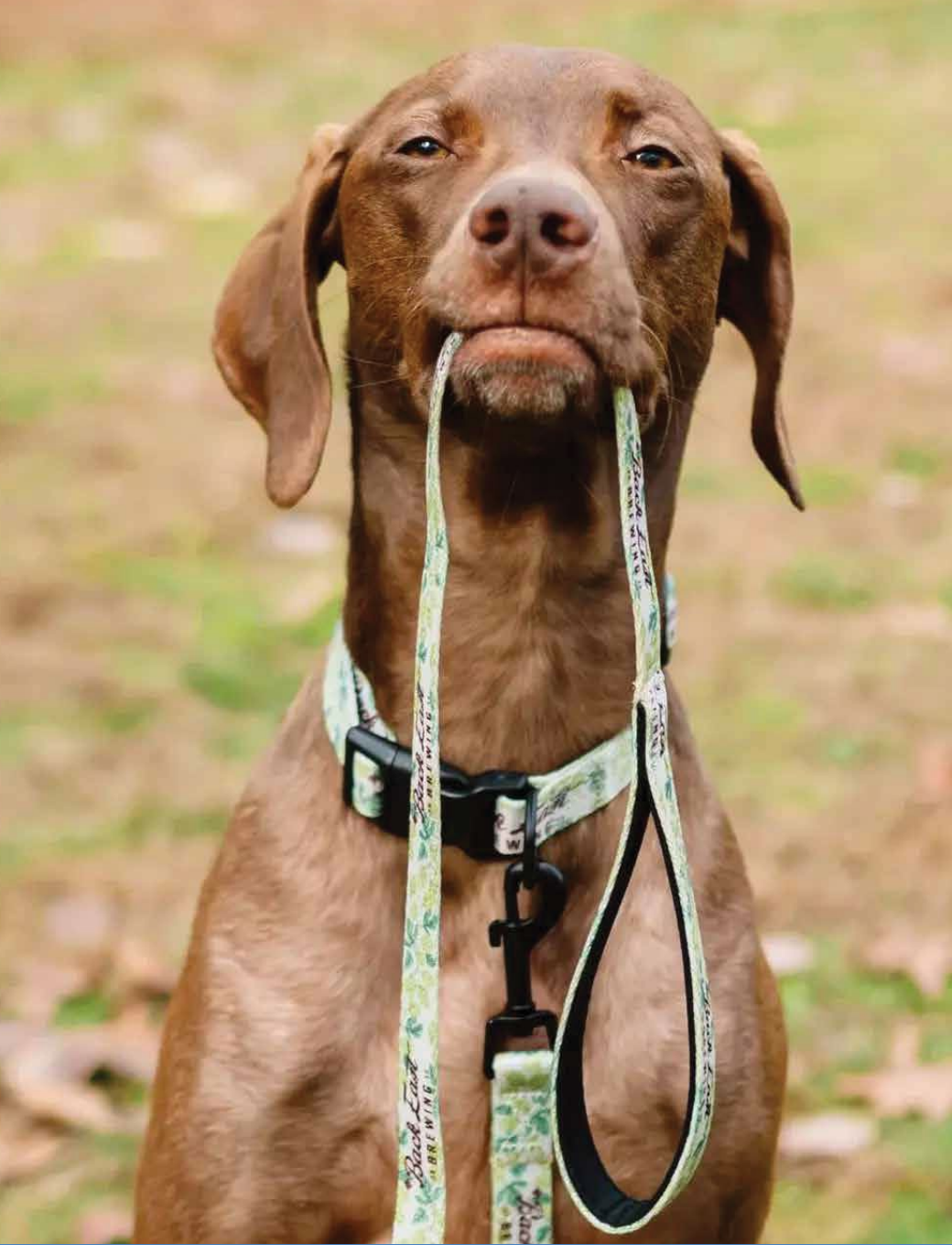
\*Note - pricing includes shipping to one location in the USA  
\*\*This is your delivered price.

# 02 FOR A WALK









NYLON LEASH

0225



Features:

- Designed with pet parent comfort in mind
- Features a padded handle for comfort
- The clasp is strong, secure and easy-to-open
- Features heavy-duty stitching and thread for durability

**Virtual proof:** Free upon request with order  
**Normal production time:** 6 weeks  
**Setup fee: Opening order:** \$75. Exact repeat setup: \$50  
**Pre-production approval hold fee:** \$150 after 3 business days

Size chart:

	Small	Medium	Large
Length	4' or 6'	4' or 6'	4' or 6'
Width	5/8"	3/4"	1"
Thickness	0.1"	0.1"	0.1"

Pricing:

Length - 4'	50	100	250	500	1000
Small	\$13.50	\$11.00	\$10.50	\$10.00	\$9.00
Medium	\$14.00	\$11.50	\$11.00	\$10.50	\$9.50
Large	\$15.00	\$12.50	\$12.00	\$11.50	\$10.50

Length - 6'

	50	100	250	500	1000
Small	\$14.50	\$12.00	\$11.50	\$11.00	\$10.00
Medium	\$15.00	\$12.50	\$12.00	\$11.50	\$10.50
Large	\$16.00	\$13.50	\$13.00	\$12.50	\$12.50

Spec Sample (2 units): \$350

\*Note - pricing includes shipping to one location in the USA  
\*\*This is your delivered price.  
\*\*\*If only ordering one size, the MOQ is 100 units.  
\*\*\*\*MOQ's are per size, per design (You cannot mix and match designs/sizes to achieve MOQ)



WEATHERPROOF COLLAR

0225

Features:

- Easy to Clean
- Smell Proof, No Hassle
- Strong and Durable
- Strong Clasp

Specs:

- 3 Different shapes for rubber emblem
- Hardware colors: Silver / Black / Gold / Rose Gold

**Virtual proof:** Free upon request with order  
**Normal production time:** 6 weeks  
**Setup fee: Opening order:** \$75. Exact repeat setup: \$50  
**Pre-production approval hold fee:** \$150 after 3 business days

Size chart:

	X-Small	Small	Medium	Large
Length	7-11"	11-16"	14-20"	18-26"
Width	3/8"	5/8"	3/4"	1"
Thickness	0.1"	0.1"	0.1"	0.1"

Pricing:

	100	500	1000
X-Small	\$9.50	\$9.00	\$8.50
Small	\$10.00	\$9.50	\$9.00
Medium	\$10.50	\$10.00	\$9.50
Large	\$11.00	\$10.50	\$10.00

Spec Sample (2 units): \$350

\*Note - pricing includes shipping to one location in the USA  
\*\*This is your delivered price.  
\*\*\*If only ordering one size, the MOQ is 100 units.  
\*\*\*\*MOQ's are per size, per design (You cannot mix and match designs/sizes to achieve MOQ)



WEATHERPROOF LEASH

0225

Features:

- Easy to Clean
- Smell Proof, No Hassle
- Strong and Durable
- Strong Clasp

Specs:

- 3 Different shapes for rubber emblem
- Hardware colors: Silver / Black / Gold / Rose Gold

Size chart:

	Small	Medium	Large
Length	4' or 6'	4' or 6'	4' or 6'
Width	5/8"	3/4"	1"
Thickness	0.1"	0.1"	0.1"

**Virtual proof:** Free upon request with order  
**Normal production time:** ~6 weeks  
**Setup fee: Opening order:** \$75. Exact repeat setup: \$50  
**Pre-production approval hold fee:** \$150 after 3 business days

Pricing:

Length - 4'	100	500	1000
Small	\$11.25	\$10.25	\$9.75
Medium	\$11.75	\$10.75	\$10.25
Large	\$12.75	\$11.75	\$11.25

Length - 6'

	100	500	1000
Small	\$11.75	\$10.75	\$7.25
Medium	\$12.25	\$11.25	\$10.75
Large	\$13.25	\$12.25	\$11.75

Spec Sample (2 units): \$350

\*Note - pricing includes shipping to one location in the USA  
\*\*If only ordering one size, the MOQ is 100 units.  
\*\*\*This is your delivered price.  
\*\*\*\*MOQ's are per size, per design (You cannot mix and match designs/sizes to achieve MOQ)





## RUNNING LEASH

0225

### Features:

- Great for any outdoor activity
- A hands-free leash won't cramp your style
- With a hands-free leash you won't tug your dog when swinging your arms
- Ideal for the active pet parent

**Virtual proof:** Free upon request with order  
**Normal production time:** ~6 weeks  
**Setup fee: Opening order:** \$75. Exact repeat setup: \$50  
**Pre-production approval hold fee:** \$150 after 3 business days

### Size chart:

	One Size
Length	6"
Width	1"
Thickness	0.1"

### Pricing:

	50	100	300	500	1000
One Size	\$16.00	\$15.00	\$14.00	\$13.50	\$13.00

Spec Sample (2 units): \$350

\*Note - pricing includes shipping to one location in the USA  
\*\*This is your delivered price.  
\*\*\*If only ordering one size, the MOQ is 100 units.  
\*\*\*\*MOQ's are per size, per design (You cannot mix and match designs/sizes to achieve MOQ)

## SLIP LEASH

0225

### Features:

- Made from a soft and durable nylon
- Easy on and off
- Adjustable to any neck size
- Trainer-recommended design allows for quick, yet gentle correction
- Strong Metal D-ring

### Size chart:

	Small	Medium	Large
Length	4' or 6'	4' or 6'	4' or 6'
Width	5/8"	3/4"	1"
Thickness	0.1"	0.1"	0.1"

**Virtual proof:** Free upon request with order  
**Normal production time:** ~6 weeks  
**Setup fee: Opening order:** \$75. Exact repeat setup: \$50  
**Pre-production approval hold fee:** \$150 after 3 business days

### Pricing:

<b>Length - 4'</b>	50	100	250	500	1000
Small	\$12.25	\$9.00	\$8.50	\$8.00	\$7.50
Medium	\$12.75	\$9.50	\$9.00	\$8.50	\$8.00
Large	\$13.75	\$10.50	\$10.00	\$9.50	\$9.00

<b>Length - 6'</b>	50	100	250	500	1000
Small	\$13.25	\$10.00	\$9.50	\$9.00	\$8.50
Medium	\$13.75	\$10.50	\$10.00	\$9.50	\$9.00
Large	\$14.75	\$11.50	\$11.00	\$10.50	\$10.00

Spec Sample (2 units): \$350

\*Note - pricing includes shipping to one location in the USA  
\*\*If only ordering one size, the MOQ is 100 units.  
\*\*\*This is your delivered price.  
\*\*\*\*MOQ's are per size, per design (You cannot mix and match designs/sizes to achieve MOQ)



## MARTINGALE COLLAR

0225

### Features:

- The martingale loop prevents the "escape artist" dog from backing out of the collar and escaping
- A limited-slip dog training collar
- A comfortable, stylish collar
- Your customers will appreciate your attention to dog safety
- Your brand featured every time the dog wears the collar!

**Virtual proof:** Free upon request with order  
**Normal production time:** ~6 weeks  
**Setup fee: Opening order:** \$75. Exact repeat setup: \$50  
**Pre-production approval hold fee:** \$150 after 3 business days

### Size chart:

	X-Small	Small	Medium	Large
Width	5-8"	8-12"	10-16"	14-20"
Length	1/2"	5/8"	3/4"	1"
Thickness	0.1"	0.1"	0.1"	0.1"

### Pricing:

	50	100	500	1000
Small	\$13.00	\$10.50	\$10.00	\$9.50
Medium	\$13.50	\$11.00	\$10.50	\$10.00
Large	\$14.00	\$11.50	\$11.00	\$10.50

Spec Sample (2 units): \$350

\*Note - pricing includes shipping to one location in the USA  
\*\*This is your delivered price.  
\*\*\*If only ordering one size, the MOQ is 100 units.  
\*\*\*\*MOQ's are per size, per design (You cannot mix and match designs/sizes to achieve MOQ)



## CAR SEAT BELT

0225

### Features:

- Adjustable for in seat movement control
- Clicks right into your seatbelt

**Virtual proof:** Free upon request with order  
**Normal production time:** ~6 weeks  
**Setup fee: Opening order:** \$75. Exact repeat setup: \$50  
**Pre-production approval hold fee:** \$150 after 3 business days

### Size chart:

	One Size
Length	16-27"
Width	1"

### Pricing:

	50	100	300	500	1000
One Size	\$14.50	\$13.00	\$12.50	\$12.00	\$11.50

Spec Sample (2 units): \$350

\*Note - pricing includes shipping to one location in the USA  
\*\*This is your delivered price.





STEP-IN HARNESS

0225

Features:

- A collar alternative
- Strong, secure double-locking buckle
- Adjustable for a perfect fit
- Heavy-duty stitching
- Strong metal D-ring

**Virtual proof:** Free upon request with order  
**Normal production time:** ~6 weeks  
**Setup fee: Opening order:** \$75. Exact repeat setup: \$50  
**Pre-production approval hold fee:**  
\$150 after 3 business days



Size chart:

	Small	Medium	Large
Width	Up to 25 lbs	Up to 55 lbs	Up to 75 lbs
Girth	8-23"	18-29"	22-39"
Thickness	0.1"	0.1"	0.1"

Pricing:

	50	100	300	500	1000
Small	\$13.00	\$12.00	\$11.50	\$11.00	\$10.50
Medium	\$14.00	\$13.50	\$13.00	\$12.50	\$11.50
Large	\$16.00	\$15.50	\$15.00	\$14.50	\$14.00

Spec Sample (2 units): \$250

\*Note - pricing includes shipping to one location in the USA  
\*\*This is your delivered price.  
\*\*\*If only ordering one size, the MOQ is 100 units.  
\*\*\*\*MOQ's are per size, per design (You cannot mix and match designs/sizes to achieve MOQ)



CHEST HARNESS

0225

Features:

- Adjustable for a perfect fit
- Soft mesh padding for comfort
- Strong metal D-ring
- A collar alternative for walks

**Virtual proof:** Free upon request with order  
**Normal production time:** ~6 weeks  
**Setup fee: Opening order:** \$75. Exact repeat setup: \$50  
**Pre-production approval hold fee:**  
\$150 after 3 business days



Size chart:

	X-Small	Small	Medium	Large
Neck	8.6"	12"	14.5"	18"
Chest	13-16.1"	16.2-20"	20.5-24.4"	24.8-32.3"

Pricing:

	100	500	1000
X-Small	\$14.00	\$13.00	\$12.50
Small	\$15.00	\$14.00	\$13.50
Medium	\$15.50	\$15.00	\$14.50
Large	\$17.00	\$16.00	\$15.50

Spec Sample (2 units): \$350

\*Note - pricing includes shipping to one location in the USA  
\*\*This is your delivered price.  
\*\*\*\*You Can Mix and Match Two (2) Sizes (of 50 units each size) to achieve MOQ of 100 units

03 ACCESSORIES







BANDANA

0225

Features:

- Breathable poly cotton blend
- High quality
- Machine washable

Size chart:

	Small	Large
Width	14"	22"
Length	19"	29"

Pricing:

	100	300	500	1000	2500
Small	\$8.50	\$8.00	\$7.50	\$7.00	\$6.50
Large	\$10.00	\$9.50	\$9.00	\$8.25	\$7.25

Spec Sample (2 units): \$2350

\*Note - pricing includes shipping to one location in the USA  
\*\*This is your delivered price.  
\*\*\*MOQ's are per size, per design (You cannot mix and match designs/sizes to achieve MOQ)

DOG HAT

0225

Features:

- 4 Different sizes
- Adjustable strap
- Breathable and comfortable
- Ear holes for added stability

Specs:

- Embroidered details
- All colors are optional

**Virtual proof:** Free upon request with order  
**Normal production time:** ~6 weeks  
**Setup fee: Opening order:** \$75. Exact repeat setup: \$50  
**Pre-production approval hold fee:** \$150 after 3 business days

Size chart:

	Small	Medium	Large	X-Large
Hat Brim Width	4.3"	5.5"	7"	7.8"
Hat Brim Length	1.7"	1.8"	1.9"	2.1"
Crown Length	6.2"	6.6"	7"	7.6"

Pricing:

	100	200	500	1000
Small	\$13.00	\$12.50	\$12.00	\$11.50
Medium	\$13.50	\$13.00	\$12.50	\$12.00
Large	\$14.00	\$13.50	\$13.00	\$12.50
X-Large	\$14.50	\$14.00	\$13.50	\$12.75

Spec Sample (2 units): \$350

\*You Can Mix and Match Two (2) Sizes to Achieve MOQ of 100 units  
\*\*Note - pricing includes shipping to one location in the USA  
\*\*\*This is your delivered price.

BOW-TIE

0225

Features:

- Easy on/off
- Soft polyester
- Machine washable

Size chart:

	One Size
Length	4"

Pricing:

	200	500	1000
One Size	\$8.50	\$7.50	\$7.00

Spec Sample (2 units): \$350

\*Note - pricing includes shipping to one location in the USA  
\*\*This is your delivered price.

NECK TIE

0225

Features:

- Easy on/off velcro strip
- Soft polyester
- Machine washable
- Good for most sized dogs

Size chart:

	One Size
Length	8"

Pricing:

	100	500	1000
One Size	\$9.00	\$8.50	\$8.00

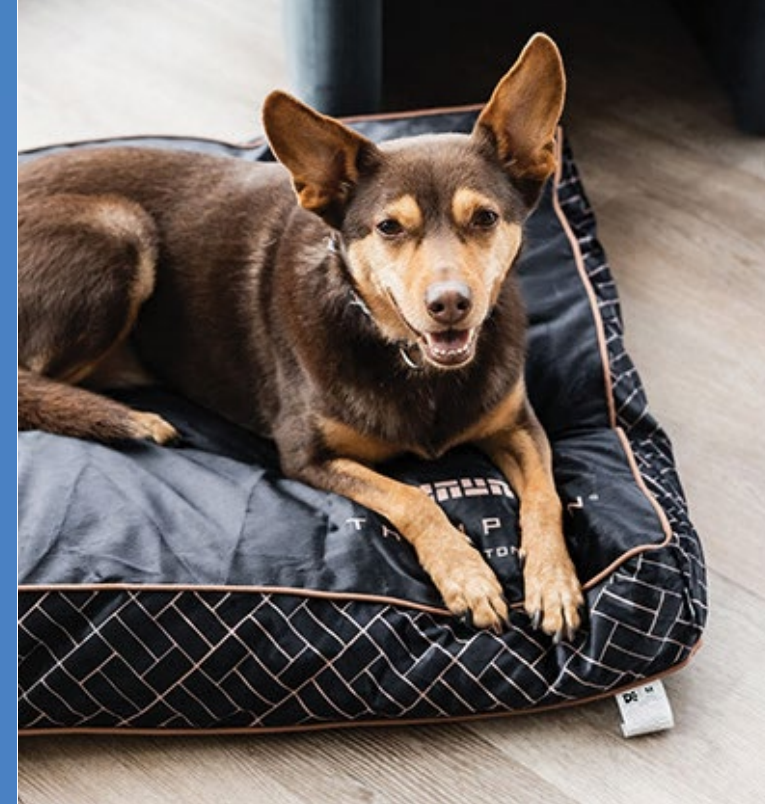
Spec Sample (2 units): \$350

\*Note - pricing includes shipping to one location in the USA  
\*\*This is your delivered price.



# 04 HOME & LIVING

**CONQUER**  
CREATIVE CONSULTING



## branded pet beds







BED

Outer shell: 6307.90.9891    Stuffing: 5506.20.0000



Features:

- Tufted plush cotton stuffing
- Removable ultra soft durable fleece cover
- Non-slip rubber bottom
- Machine washable

Size chart:

	Small	Medium	Large
Width	26"	34"	40"
Length	20"	26"	30"
Depth	4"	4"	4"

Pricing:

	25	100
Small	\$85.00	\$80.00
Medium	\$90.00	\$85.00
Large	\$95.00	\$90.00

Spec Sample (2 units): \$350

\*Note - pricing includes shipping to one location in the USA  
\*\*This is your delivered price.  
\*\*\*MOQ's are per size, per design (You cannot mix and match designs/sizes to achieve MOQ)



TOY BASKET

0225

Features:

- Folds completely flat for easy travel and storage
- Removable bottom plate

Size chart:

	One Size
Width	15"
Length	9"
Depth	10"

Pricing:

	25	100	500
One Size	\$35.00	\$34.00	\$32.00

Spec Sample (2 units): \$350

\*Note - pricing includes shipping to one location in the USA  
\*\*This is your delivered price.



PLACEMAT

0225

Features:

- Absorbent fleece top
- Non-slip rubber bottom to prevent sliding
- Machine washable

Size chart:

	One Size
Width	11.6"
Length	19"

Pricing:

	25	50	100	500
One Size	\$24.00	\$21.00	\$19.00	\$18.00

Spec Sample cost (2 units): \$350

\*Note - pricing includes shipping to one location in the USA  
\*\*This is your delivered price.



## branded pet placemats



## branded pet bowls







INSULATED STAINLESS STEEL BOWL 0225



- Features:**
- BPA Free
  - Food grade
  - Easy to clean
  - Anti slip bottom
  - Rust resistant
  - 34 Color options
  - 2 Color logo imprint

**Virtual proof:** Free upon request with order  
**Normal production time:** ~6 weeks  
**Setup fee: Opening order:** \$75. Exact repeat setup: \$50  
**Pre-production approval hold fee:**  
\$150 after 3 business days

**Size chart:**

	32 oz	64 oz
Diameter	7.2"	8"
Height	2.5"	3.5"

**Pricing:**

Ocean Ship	100	500
32 oz	\$26.00	\$23.00
64 oz	\$27.00	\$21.00

Air Ship	100
32 oz	\$28.00
64 oz	\$33.00

Spec Sample (2 units): \$350

\*Note - pricing includes shipping to one location in the USA  
\*\*This is your delivered price.  
\*\*\*There is an option to ship via air. Please inquire for pricing

\*\*\*\*MOQ's are per size, per design (You cannot mix and match designs/sizes to achieve MOQ)



TRAVEL BOWL 0225



- Features:**
- Collapsible
  - Waterproof liner
  - Lightweight
  - Machine Washable, Air Dry

**Virtual proof:** Free upon request with order  
**Normal production time:** 6 weeks  
**Setup fee: Opening order:** \$75. Exact repeat setup: \$50  
**Pre-production approval hold fee:**  
\$150 after 3 business days

**Size chart:**

	One Size
Width	8.25"
Height	5"
Depth	8"
Opening	5.5"

**Pricing:**

	100	500	1000
One Size	\$12.00	\$11.50	\$11.00

Spec Sample (2 units): \$250

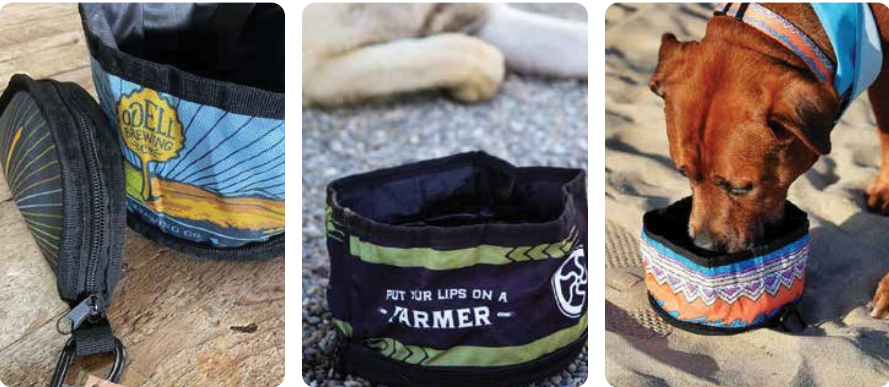
\*Note - pricing includes shipping to one location in the USA  
\*\*This is your delivered price.  
\*\*\*MOQ's are per size, per design (You cannot mix and match designs/sizes to achieve MOQ)





## FOLDED TRAVEL BOWL

0225



### Features:

- Collapsible
- Foldable with Zipper
- Waterproof liner
- Lightweight
- Machine washable, air dry

### Size chart:

	One Size
Diameter	7.5"
Height	3.7"
Capacity	1100ml

### Pricing:

	100	500	1000
One Size	\$12.00	\$11.50	\$11.00

Spec Sample (2 units): \$350

\*Note - pricing includes shipping to one location in the USA  
\*\*This is your delivered price.

**Virtual proof:** Free upon request with order  
**Normal production time:** ~6 weeks  
**Setup fee: Opening order:** \$75. Exact repeat setup: \$50  
**Pre-production approval hold fee:** \$150 after 3 business days

## DOUBLE FOLDED TRAVEL BOWL

0225

### Features:

- Collapsible
- Foldable with Zipper
- Waterproof liner
- Lightweight
- Machine washable, air dry

### Size chart:

	One Size
Diameter	6.2"
Height	3.7"
Capacity	1100ml

### Pricing:

	100	500	1000
One Size	\$14.00	\$13.50	\$13.00

Spec Sample (2 units): \$350

\*Note - pricing includes shipping to one location in the USA  
\*\*This is your delivered price.

**Virtual proof:** Free upon request with order  
**Normal production time:** ~6 weeks  
**Setup fee: Opening order:** \$75. Exact repeat setup: \$50  
**Pre-production approval hold fee:** \$150 after 3 business days



## COLLAPSIBLE TRAVEL CUP

0225

### Features:

- Portable bowl
- Quick-release clip
- Great for traveling, camping & walks
- Lightweight, durable and dishwasher safe
- Collapses to less than 0.5 inches thick
- For smaller breeds

### Color options:

500 Units	2000+ Units
● Black	● All Colors
● Red	
● Blue	
● Orange	
● Yellow	
● Green	

### Size chart:

	One Size
Diameter	5.1"
Height	2.2"
Height - Folded	0.5"

### Pricing:

	500	1000	2000
One Size	\$8.00	\$7.50	\$7.00

Spec Sample (2 units): \$350

\*Note - pricing includes shipping to one location in the USA  
\*\*This is your delivered price.

**Virtual proof:** Free upon request with order  
**Normal production time:** ~6 weeks  
**Setup fee: Opening order:** \$75. Exact repeat setup: \$50  
**Pre-production approval hold fee:** \$150 after 3 business days





STAINLESS STEEL BOWL

- Features:**
- 5 Sizes to choose from
  - Constructed of stainless steel with removable rubber ring for easy cleaning
  - Hand wash Only
  - Durable quality and rust-resistant

**Virtual proof:** Free upon request with order  
**Normal production time:** ~6 weeks  
**Setup fee: Opening order:** \$75. Exact repeat setup: \$50  
**Pre-production approval hold fee:**  
\$150 after 3 business days

**Size chart:**

	XS	S	M	L	XL
Top Dia.	4.7"	5.5"	6.5"	8"	9"
Bottom Dia.	6.1"	7"	8.4"	10.2"	11.8"
Capacity	5 oz	9 oz	19 oz	27 oz	55 oz

**Pricing:**

	1000
X-Small	\$9.50
Small	\$10.00
Medium	\$11.50
Large	\$12.00
X-Large	\$14.00

Spec Sample (2 units): \$350

\*Note - pricing includes shipping to one location in the USA  
\*\*This is your delivered price.  
\*\*\*MOQ's are per size, per design (You cannot mix and match designs/sizes to achieve MOQ)



LASER ETCHED BOWLS

- Features:**
- 5 Sizes to choose from
  - Constructed of stainless steel with removable rubber ring for easy cleaning
  - Hand wash Only
  - Durable quality and rust-resistant

**Virtual proof:** Free upon request with order  
**Normal production time:** ~6 weeks  
**Setup fee: Opening order:** \$75. Exact repeat setup: \$50  
**Pre-production approval hold fee:**  
\$150 after 3 business days

**Size chart:**

	XS	S	M	L	XL
Top Dia.	4.7"	5.5"	6.5"	8"	9"
Bottom Dia.	6.1"	7"	8.4"	10.2"	11.8"
Capacity	5 oz	9 oz	19 oz	27 oz	55 oz

**Pricing:**

	100	500
X-Small	\$10.00	\$9.50
Small	\$11.00	\$10.50
Medium	\$11.50	\$11.00
Large	\$12.50	\$12.00
X-Large	\$14.00	\$13.50

Spec Sample (2 units): \$350

\*Note - pricing includes shipping to one location in the USA  
\*\*This is your delivered price.  
\*\*\*MOQ's are per size, per design (You cannot mix and match designs/sizes to achieve MOQ)

zippered poop bag pouch







## ZIPPERED POOP BAG HOLDER

0225



### Features:

- Dispenser holds a roll of poop bags
- Zippered snag-free opening for quick pull out and easy access to poop bags
- Great for dog walking & dog training
- Can be attached to the dogs leash

### Size chart:

One Size	
Width	2"
Length	3.75"
Height	1.5"

### Pricing:

	250	500	1000	2000
One Size	\$10.00	\$9.50	\$9.00	\$8.50

Spec Sample (2 units): \$350

\*Note - pricing includes shipping to one location in the USA  
\*\*This is your delivered price.

**Virtual proof:** Free upon request with order  
**Normal production time:** ~6 weeks  
**Setup fee: Opening order:** \$75 Exact repeat setup: \$50  
**Pre-production approval hold fee:** \$150 after 3 business days



## CAN POOP BAG HOLDER

0225

### Features:

- Perfect for pet owners on the go
- Dispenser fits most standard dog poop bag rolls
- Can be easily clipped onto a leash or purse for added convenience

### Size chart:

	Normal
Width	1.5"
Height	4"

### Pricing:

	250	500	1000
One Size	\$7.50	\$7.00	\$6.75

Spec Sample (2 units): \$350

\*Note - pricing includes shipping to one location in the USA  
\*\*This is your delivered price.

**Virtual proof:** Free upon request with order  
**Normal production time:** ~6 weeks  
**Setup fee: Opening order:** \$75. Exact repeat setup: \$50  
**Pre-production approval hold fee:** \$1050 after 3 business days



## WINE POOP BAG HOLDER

0225

### Features:

- Perfect for pet owners on the go
- Dispenser fits most standard dog poop bag rolls
- Can be easily clipped onto a leash or purse for added convenience

### Size chart:

	Normal
Width	1.5"
Height	5"

### Pricing:

	250	500	1000
One Size	\$8.50	\$8.00	\$7.50

Spec Sample (2 units): \$350

\*Note - pricing includes shipping to one location in the USA  
\*\*This is your delivered price.

**Virtual proof:** Free upon request with order  
**Normal production time:** ~6 weeks  
**Setup fee: Opening order:** \$75. Exact repeat setup: \$50  
**Pre-production approval hold fee:** \$150 after 3 business days





## POOP BAGS HOLDER

0225

### Features:

- Perfect for pet owners on the go
- Dispenser fits most standard dog poop bag rolls
- Can be easily clipped onto a leash or purse for added convenience

### Color options:

- |                  |                  |              |
|------------------|------------------|--------------|
| 500 Units - Bone | 500 Units - Tube | 10000+ Units |
| Blue             | Red              | All Colors   |
| Purple           | Blue             |              |
| Pink             | Yellow           |              |
| Orange           | Black            |              |
| Green            | Green            |              |

**Virtual proof:** Free upon request with order  
**Normal production time:** ~6 weeks  
**Setup fee: Opening order:** \$75. Exact repeat setup: \$50  
**Pre-production approval hold fee:** \$150 after 3 business days

### Size chart:

	One Size
Width	1.5"
Length	3.1"

### Pricing:

	500	1000	5000
One Size	\$6.00	\$5.75	\$5.50

Spec Sample (2 units): \$350

\*Note - pricing includes shipping to one location in the USA  
\*\*This is your delivered price.  
\*\*\*Poop bag holder comes empty. If you want a blank poop bag inside, it will be an additional \$0.50 per unit.

## POOP BAGS

### Features:

- .2 mm thick bags - holds 33.8 oz
- Each unit = 120 bags/8 rolls of 15 bags each
- Fits all standard poop bag holders

**Virtual proof:** Free upon request with order  
**Normal production time:** ~6 weeks  
**Setup fee: Opening order:** \$75. Exact repeat setup: \$50  
**Pre-production approval hold fee:** \$150 after 3 business days

### Size chart:

	One Size
Width	9.06"
Length	14.17"

### Pricing:

MOQ: 655

Our poop bags require a custom quote. Once design is finalized, we will be able to quote you within 72 hours.

Spec Sample (2 Units): \$400

\*Note - pricing includes shipping to one location in the USA  
\*\*This is your delivered price.

## CANVAS PET TOTE BAG

### Features:

- Quality material
- Multiple pockets
- Poop Bag Holder
- Waterproof liner
- Leash buckle to keep dog secure

**Virtual proof:** Free upon request with order  
**Normal production time:** ~6 weeks  
**Setup fee: Opening order:** \$75. Exact repeat setup: \$50  
**Pre-production approval hold fee:** \$150 after 3 business days

### Size chart:

	Small	Medium
Width	6"	8"
Length	12"	14"
Height	10"	12"
Capacity	Up to 8lbs	Up to 15lbs

### Pricing:

	120	200
One Size	\$65.00	\$63.00

Spec Sample (2 units): \$350

\*Note - pricing includes shipping to one location in the USA  
\*\*This is your delivered price.  
\*\*\*MOQ's are per size, per design (You cannot mix and match designs/sizes to achieve MOQ)

## TREAT BAG

### Features:

- Waterproof liner
- Drawstring closure
- Carabiner attached for easy clip on
- Holds up to 1 cup of dog treats

**Virtual proof:** Free upon request with order  
**Normal production time:** ~6 weeks  
**Setup fee: Opening order:** \$75. Exact repeat setup: \$50  
**Pre-production approval hold fee:** \$150 after 3 business days

### Size chart:

	One Size
Diameter	3"
Height	7"

### Pricing:

	100	300	500
One Size	\$10.50	\$10.00	\$9.75

Spec Sample (2 units): \$350

\*Note - pricing includes shipping to one location in the USA  
\*\*This is your delivered price.





VET WRAP

0225



Features:

- Extra support or protection during injury recovery
- Durable, comfortable, and easy to apply

**Virtual proof:** Free upon request with order  
**Normal production time:** ~10 weeks  
**Setup fee: Opening order:** \$75. Exact repeat setup: \$50  
**Pre-production approval hold fee:**  
\$150 after 3 business days

Size chart:

	One Size
Height	3"
Length	14.75 feet each roll

Pricing:

MOQ: Starts at 2,688 rolls for the 3" vet wrap

Our Vet Wrap require a custom quote.  
Once design is finalized, we will be able to  
quote you within 72 hours.

Spec Sample (2 units): Inquire

\*Note - pricing includes shipping to one location in the USA  
\*\*This is your delivered price.  
\*\*\*Mold fee: ~\$1000

05  
APPAREL





## SLEEVELESS HOODIE

0225



### Features:

- Cotton and polyester fabric blend
- Soft feel
- Great for indoor & outdoor use
- Machine washable

**Virtual proof:** Free upon request with order  
**Normal production time:** ~6 weeks  
**Setup fee: Opening order:** \$75. Exact repeat setup: \$50  
**Pre-production approval hold fee:** \$150 after 3 business days

### Size chart:

	XS	S	M	L	XL
Neck	13-15"	15-17"	17-19"	19-21"	22-24"
Back Length	13"	16"	19"	22"	25"
Chest	17-22"	22-25"	25-27"	27-32"	32-36"
Armhole	11"	11"	12"	13"	15"

### Pricing:

	25	50	100	300	500
X-Small	\$22.00	\$21.00	\$20.00	\$19.00	\$17.00
Small	\$23.00	\$22.00	\$21.00	\$20.00	\$18.00
Medium	\$28.00	\$27.00	\$26.00	\$21.00	\$19.00
Large	\$32.00	\$31.00	\$30.00	\$29.00	\$27.00
X-Large	\$33.00	\$32.00	\$31.00	\$30.00	\$28.00

Spec Sample (2 units): \$350

\*Note - pricing includes shipping to one location in the USA  
\*\*This is your delivered price.  
\*\*\*MOQ's are per size, per design (You cannot mix and match designs/sizes to achieve MOQ)





FULL-ZIP HOODIE

0225

Features:

- Opening for leash clasp on back
- Cut to avoid doggy messes
- 60/40 cotton/polyester
- Machine Washable

**Virtual proof:** Free upon request with order  
**Normal production time:** ~6 weeks  
**Setup fee: Opening order:** \$75. Exact repeat setup: \$50  
**Pre-production approval hold fee:** \$150 after 3 business days



Size chart:

	Small	Medium	Large	X-Large
Back Width	9.25"	12"	14"	17"
Chest Width	6.5"	9"	10.5"	14"
Hood Length	7"	10"	11"	13"
Sleeve Length	1.25"	1.75"	2.5"	3.25"

Pricing:

	25	50	100	300	500
Small	\$22.00	\$20.00	\$19.00	\$18.00	\$17.00
Medium	\$23.00	\$21.00	\$20.00	\$19.00	\$18.00
Large	\$25.00	\$23.00	\$22.00	\$21.00	\$20.00
X-Large	\$28.50	\$26.50	\$25.50	\$24.50	\$23.50

Spec Sample (2 units): \$350

\*Note - pricing includes shipping to one location in the USA  
\*\*This is your delivered price.  
\*\*\*MOQ's are per size, per design (You cannot mix and match designs/sizes to achieve MOQ)



COAT

Features:

- Insulated with warm fleece lining
- Easy to take on/off
- Zipper and leash flap simplifies walk time
- Machine washable

**Virtual proof:** Free upon request with order  
**Normal production time:** ~6 weeks  
**Setup fee: Opening order:** \$75. Exact repeat setup: \$50  
**Pre-production approval hold fee:** \$150 after 3 business days



Size chart:

	XS	S	M	L	XL
Chest	16-19"	20-22"	23-25"	26-30"	31-34"
Back Length	13"	16"	19"	22"	25"

Pricing:

	25	100
X-Small	\$25.00	\$22.00
Small	\$26.00	\$23.00
Medium	\$28.00	\$25.00
Large	\$30.00	\$27.00
X-Large	\$32.00	\$29.00

Spec Sample (2 units): \$350

\*Note - pricing includes shipping to one location in the USA  
\*\*This is your delivered price.  
\*\*\*MOQ's are per size, per design (You cannot mix and match designs/sizes to achieve MOQ)



T-SHIRT

Features:

- Ultra soft poly/cotton blend
- Fabric breathes to keep dogs comfortable
- Easy to take on/off
- Machine washable

**Virtual proof:** Free upon request with order  
**Normal production time:** ~6 weeks  
**Setup fee: Opening order:** \$75. Exact repeat setup: \$50  
**Pre-production approval hold fee:** \$150 after 3 business days



Size chart:

	XS	S	M	L	XL
Neck	10-13"	11-14"	12.5-16"	17-19"	22-24"
Back	12-13"	14-15"	16-17"	19-21"	24-26"
Chest	14-18"	16-20"	23-25"	28-31"	33-35"
Armhole	10-12"	11-13"	12-14"	14-16"	16-18"

Pricing:

	25	100	300
X-Small	\$19.00	\$17.00	\$15.00
Small	\$19.00	\$17.00	\$15.00
Medium	\$19.00	\$17.00	\$15.00
Large	\$19.00	\$17.00	\$15.00
X-Large	\$19.00	\$17.00	\$15.00

Spec Sample (2 units): \$350

\*Note - pricing includes shipping to one location in the USA  
\*\*This is your delivered price.  
\*\*\*MOQ's are per size, per design (You cannot mix and match designs/sizes to achieve MOQ)



DOG JERSEYS

Features:

- Fabric breathes to keep dogs comfortable
- Easy to take on/off
- Machine washable

**Virtual proof:** Free upon request with order  
**Normal production time:** ~6 weeks  
**Setup fee: Opening order:** \$75. Exact repeat setup: \$50  
**Pre-production approval hold fee:** \$150 after 3 business days



Size chart:

	XS	S	M	L	XL
Neck	10-13"	11-14"	12.5-16"	17-19"	22-24"
Back	12-13"	14-15"	16-17"	19-21"	24-26"
Chest	14-18"	16-20"	23-25"	28-31"	33-35"
Armhole	10-12"	11-13"	12-14"	14-16"	16-18"

Pricing:

	100	500
X-Small	\$16.50	\$15.00
Small	\$16.50	\$15.00
Medium	\$16.50	\$15.00
Large	\$16.50	\$15.00
X-Large	\$16.50	\$15.00

Spec Sample (2 units): \$350

\*Note - pricing includes shipping to one location in the USA  
\*\*This is your delivered price.  
\*\*\*If mixing and matching, the MOQ is 25 units per size





## KNIT SWEATER

0225

### Features:

- Warm and comfortable
- Square body shape offers full coverage
- Underside features high-cut, stay-dry belly
- Material: Modal Yarn
- Machine Washable

**Virtual proof:** Free upon request with order  
**Normal production time:** ~ 6 weeks  
**Setup fee: Opening order:** \$75. Exact repeat setup: \$50  
**Pre-production approval hold fee:**  
\$150 after 3 business days

### Size chart:

	XS	S	M	L	XL
Length	7.5-10"	9.5-12"	11.5-14"	13.5-16.5"	15.5-18.5"
Neck	7.5-9.5"	9-11"	10.5-12.5"	12-14"	13.5-15.5"
Girth	10.5-13"	12.5-16"	15.5-18"	17.5-20.5"	20-23"

### Pricing:

	300	500	1000
All Sizes	\$23.00	\$22.00	\$20.00

Spec Sample (2 units): \$350

\*Note - pricing includes shipping to one location in the USA  
\*\*This is your delivered price.  
\*\*\*You can mix and match sizes to achieve MOQ

## TOWELS

0225

### Features:

- Machine washable
- Absorbant microfiber material
- Fast drying

**Virtual proof:** Free upon request with order  
**Normal production time:** ~6 weeks  
**Setup fee: Opening order:** \$75. Exact repeat setup: \$50  
**Pre-production approval hold fee:**  
\$150 after 3 business days

### Size chart:

	One Size
Width	35"
Length	23"

### Pricing:

	25	100	200	500
One Size	\$27.00	\$24.00	\$22.00	\$20.00

Spec Sample cost (2 units): \$350

\*Note - pricing includes shipping to one location in the USA  
\*\*This is your delivered price.

# 06 FOR CATS





## CATNIP TOY

0225



### Features:

- Filled with catnip
- Ultra lightweight
- Durable fleece
- Puurfec for all size cats

### Size chart:

Our PrideBites catnip toys are fully customizable. Available in any shape, size and color. We can take any logo, image, regional/national icon or idea and help you turn it into a toy.

### Pricing:

	100	300	500	1000
One Size	\$7.00	\$6.50	\$6.00	\$5.50

Spec Sample (2 units): \$350

\*Note - pricing includes shipping to one location in the USA  
\*\*This is your delivered price.

**Virtual proof:** Free upon request with order  
**Normal production time:** ~6 weeks  
**Setup fee: Opening order:** \$75. Exact repeat setup: \$50  
**Pre-production approval hold fee:** \$150 after 3 business days



## CATNIP PLUSH TOY

0225

### Features:

- Filled with catnip
- Ultra lightweight
- Durable fleece
- Puurfec for all size cats

### Size chart:

Our PrideBites catnip plush toys are fully customizable. Available in any shape, size and color. We can take any logo, image, regional/national icon or idea and help you turn it into a toy.

### Pricing:

	250	500	1000
One Size	\$8.00	\$7.50	\$7.00

Spec Sample (2 units): \$350

\*Note - pricing includes shipping to one location in the USA  
\*\*This is your delivered price.

**Virtual proof:** Free upon request with order  
**Normal production time:** ~6 weeks  
**Setup fee: Opening order:** \$75. Exact repeat setup: \$50  
**Pre-production approval hold fee:** \$150 after 3 business days



## CATNIP PLUSH CAN TOY

0225

### Features:

- Filled with catnip
- Ultra lightweight
- Durable fleece
- Puurfec for all size cats

### Size chart:

Our PrideBites catnip plush toys are fully customizable. Available in any shape, size and color. We can take any logo, image, regional/national icon or idea and help you turn it into a toy.

### Pricing:

	100	250	500	1000
One Size	\$8.50	\$8.00	\$7.50	\$7.00

Spec Sample (2 units): \$350

\*Note - pricing includes shipping to one location in the USA  
\*\*This is your delivered price.

**Virtual proof:** Free upon request with order  
**Normal production time:** ~6 weeks  
**Setup fee: Opening order:** \$75. Exact repeat setup: \$50  
**Pre-production approval hold fee:** \$150 after 3 business days





## CATNIP PLUSH CORK TOY

0225

### Features:

- Filled with catnip
- Ultra lightweight
- Cork polyester material
- Puurfect for all size cats

### Size chart:

Our PrideBites catnip plush toys are fully customizable. Available in any shape, size and color. We can take any logo, image, regional/national icon or idea and help you turn it into a toy.

### Pricing:

	250	500	1000
One Size	\$800	\$7.50	\$7.00

Spec Sample (2 units): \$350

\*Note - pricing includes shipping to one location in the USA  
\*\*This is your delivered price.

## CATNIP WAND TOY

0225

### Features:

- Contains catnip
- Mental stimulation for cats
- Relieves stress, anxiety, & boredom

### Notes:

- Stick length: 18.5"
- Rope length: 23"
- Available stick colors: Black, White, Yellow, Pink, Blue, Red

### Size chart:

Our PrideBites catnip toys are fully customizable. Available in any shape, size and color. We can take any logo, image, regional/national icon or idea and help you turn it into a toy.

### Pricing:

	200	400	600	1000
One Size	\$1000	\$9.50	\$9.00	\$8.50

Spec Sample (2 units): \$350

\*Note - pricing includes shipping to one location in the USA  
\*\*This is your delivered price.

**Virtual proof:** Free upon request with order  
**Normal production time:** ~6 weeks  
**Setup fee: Opening order:** \$75. Exact repeat setup: \$50  
**Pre-production approval hold fee:** \$150 after 3 business days



## CAT BED

**Virtual proof:** Free upon request with order  
**Normal production time:** ~6 weeks  
**Setup fee: Opening order:** \$75. Exact repeat setup: \$50  
**Pre-production approval hold fee:** \$150 after 3 business days

### Pricing:

	25	100
One Size	\$80.00	\$75.00

Spec Sample (2 units): \$350

\*Note - pricing includes shipping to one location in the USA  
\*\*This is your delivered price.



## CAT PLACEMAT

**Virtual proof:** Free upon request with order  
**Normal production time:** ~6 weeks  
**Setup fee: Opening order:** \$75. Exact repeat setup: \$50  
**Pre-production approval hold fee:** \$150 after 3 business days

### Pricing:

	25	50	100	500
One Size	\$26.00	\$22.00	\$21.00	\$20.00

Spec Sample (2 units): \$350

\*Note - pricing includes shipping to one location in the USA  
\*\*This is your delivered price.



## CAT BOWTIE

**Virtual proof:** Free upon request with order  
**Normal production time:** ~6 weeks  
**Setup fee: Opening order:** \$75. Exact repeat setup: \$50  
**Pre-production approval hold fee:** \$150 after 3 business days

### Pricing:

	200	500	1000
One Size	\$8.50	\$7.50	\$7.00

Spec Sample (2 units): \$350

\*Note - pricing includes shipping to one location in the USA  
\*\*This is your delivered price.



## CAT COLLAR

**Virtual proof:** Free upon request with order  
**Normal production time:** ~6 weeks  
**Setup fee: Opening order:** \$75. Exact repeat setup: \$50  
**Pre-production approval hold fee:** \$150 after 3 business days

### Pricing:

	50	100	300	500	1000
One Size	\$11.00	\$9.00	\$8.50	\$8.00	\$7.50

Spec Sample (2 units): \$350

\*Note - pricing includes shipping to one location in the USA  
\*\*This is your delivered price.



[illegible]

## A collage of 16 photographs featuring dogs in various costumes and accessories. The images are arranged in a grid-like fashion. Top row: A dog wearing a blue and white bandana; a dog holding a green bottle; a close-up of a dog's head with a colorful collar; a dog holding an orange ruffled accessory. Second row: A dog holding a black sign that says "KETTLEBELL KINGS"; a dog holding a purple can labeled "GOOSE LEMON"; a dog wearing a black shirt and a patterned bow tie; a dog wearing a red cap and a harness. Third row: A dog wearing a Papa John's sign around its neck; a dog sitting outdoors with its mouth open; a dog holding an orange bottle; a dog wearing a dark blue bandana with a bicycle logo and the text "RAD POWER BIKES". Fourth row: A dog wearing a patterned collar; a dog holding a blue car-shaped accessory; a dog jumping towards a yellow ball; a dog wearing a white bandana with palm trees and holding two bottles of JAJA.

[illegible]

A collage of 16 photographs featuring dogs in various costumes and accessories. The images are arranged in a grid-like fashion. Top row: A dog wearing a blue and white bandana; a dog holding a green bottle; a close-up of a dog's head with a colorful collar; a dog holding an orange ruffled accessory. Second row: A dog holding a black sign that says "KETTLEBELL KINGS"; a dog holding a purple can labeled "GOOSE LEMON"; a dog wearing a black shirt and a patterned bow tie; a dog wearing a red cap and a harness. Third row: A dog wearing a Papa John's sign around its neck; a dog sitting outdoors with its mouth open; a dog holding an orange bottle; a dog wearing a dark blue bandana with a bicycle logo and the text "RAD POWER BIKES". Fourth row: A dog wearing a patterned collar; a dog holding a blue car-shaped accessory; a dog jumping towards a yellow ball; a dog wearing a white bandana with palm trees and holding two bottles of JAJA.

# THANK YOU!

[illegible]